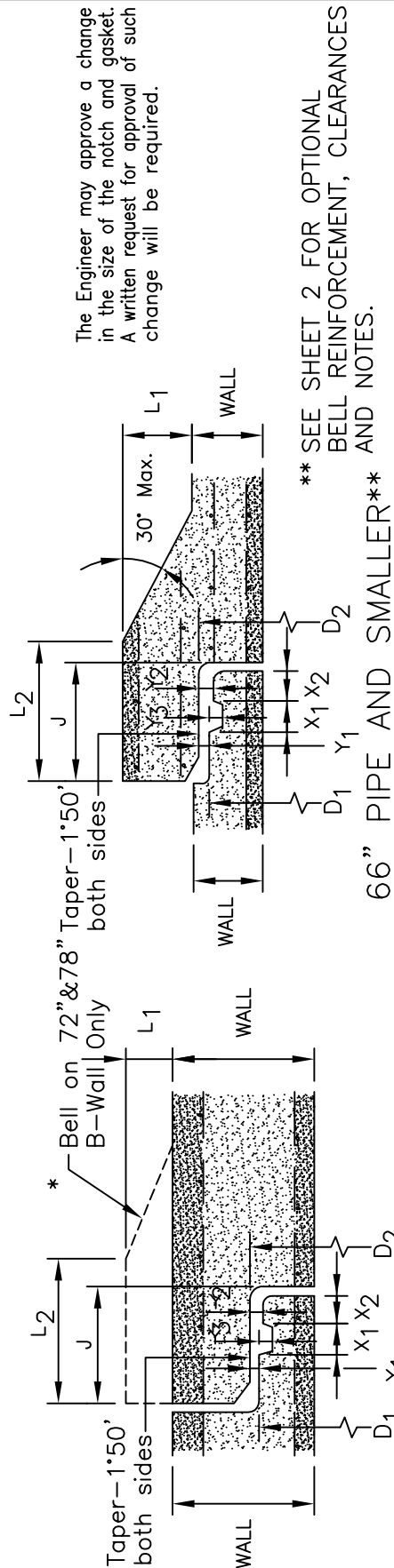


Diam. D	Approx. dia. Gasket Mat'l. Not Stretched	Gasket Vol. in Cu. In.	Length of Joint J	D <sub>1</sub>	D <sub>2</sub>	(Min.) L <sub>2</sub>	B-Wall L <sub>1</sub>	C-Wall L <sub>1</sub>	X <sub>1</sub>	X <sub>2</sub>	Y <sub>1</sub>	Y <sub>2</sub>	Y <sub>3</sub>
12"	21/32"	13.5	3-5/8"	15.223"	15.331"	5"	2"		1"	7/8"	0.062"	0.090"	0.313"
15"	21/32"	16.5	3-5/8"	18.723	18.831	4-3/4	2-3/16		1	7/8	0.062	0.090	0.313
18"	21/32"	19.5	3-5/8"	22.098	22.206	5	2-3/8		1	7/8	0.062	0.090	0.313
21"	21/32"	22.5	3-7/8"	25.600	25.724	5-1/4	2-9/16		1	7/8	0.062	0.090	0.313
24"	21/32"	25.5	3-7/8"	28.975	29.099	5-1/2	2-3/4	2"	1	7/8	0.062	0.090	0.313
27"	21/32"	29.0	4	32.476	32.608	5-1/2	2-3/4	2	1	7/8	0.062	0.090	0.313
30"	21/32"	32.0	4	35.976	36.108	5-1/2	2-3/4	2	1	7/8	0.062	0.090	0.313
33"	21/32"	35.0	4-1/8"	39.476	39.616	5-3/4	2-7/8	2-1/8	1	7/8	0.062	0.090	0.313
36"	21/32"	38.0	4-1/8"	42.976	43.116	6	3-1/8	2-3/8	1	7/8	0.062	0.090	0.313
42"	3/4	59.0	4-5/8"	50.183	50.183	6-3/4	3-3/4	3	1-3/16	1	0.067	0.129	0.376
48"	3/4	67.0	4-3/4	57.023	57.193	7-1/4	4-1/8	3-3/8	1-3/16	1	0.067	0.129	0.376
54"	3/4	74.0	5	63.007	63.192	7-1/2	3-5/8	2-7/8	1-3/16	1	0.067	0.129	0.376
60"	3/4	81.0	5	69.007	69.192	7-1/2	3-1/8	2-3/8	1-3/16	1	0.067	0.129	0.376
66"	3/4	88.0	5	75.007	75.192	7-1/2	2-3/4	2	1-3/16	1	0.067	0.129	0.376
72"	13/16	106.0	5-1/4	79.250	79.400	8*	3/4*	0	1-3/16	1-1/4	0.093	0.190	0.376
78"	13/16	116.0	5-1/4	86.250	86.400	8*	3/4*	0	1-3/16	1-1/4	0.093	0.190	0.376
84"	13/16	123.0	5-1/4	91.500	91.650		0	0	1-3/16	1-1/4	0.093	0.190	0.376
90"	13/16	131.0	5-1/4	97.750	97.900		0	0	1-3/16	1-1/4	0.093	0.190	0.376
96"	13/16	140.0	5-1/4	104.250	104.400		0	0	1-3/16	1-1/4	0.093	0.190	0.376
102"	13/16	149.0	5-1/4	110.750	110.900		0	0	1-3/16	1-1/4	0.093	0.190	0.376
108"	13/16	157.0	5-1/4	117.250	117.400		0	0	1-3/16	1-1/4	0.093	0.190	0.376



72" PIPE AND LARGER

66" PIPE AND SMALLER\*\*

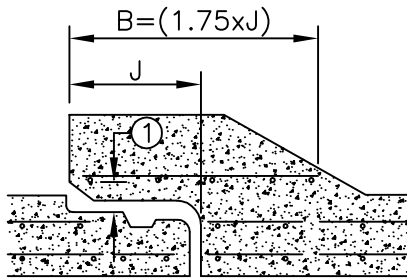
TOLERANCES IN DIMENSIONS:  
 Joint dimensions are nominal and subject to reasonable manufacturing tolerances.  
 The tongue and groove shall be such that when the pipe is jointed with the gasket in place a proper fit is obtained. Final acceptance of the pipe will be at the job site after effective jointing has been obtained.

Dimensions shown are design dimensions, inspectors shall measure to the nearest 1/8 of an inch.  
 Gasket volumes: ±4% for pipe 72" and larger, ±10% for under 72".

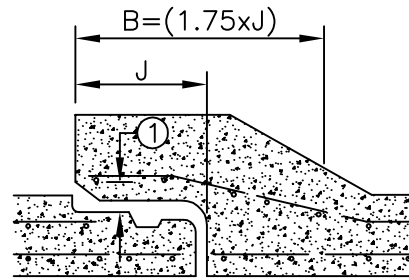
APPROVED Apr. 15, 1986  
**R.H. Sullivan**  
 Assistant Division Director  
 Technical Services

STATE OF MINNESOTA  
 DEPARTMENT OF TRANSPORTATION  
**GASKET JOINT FOR R.C. PIPE**

SPECIFICATION REFERENCE	STANDARD PLATE NO.
2501	3006 F
2502	
2503	
1 of 2	



WOVEN WIRE MESH OR  
CYLINDRICAL MACHINE CAGE

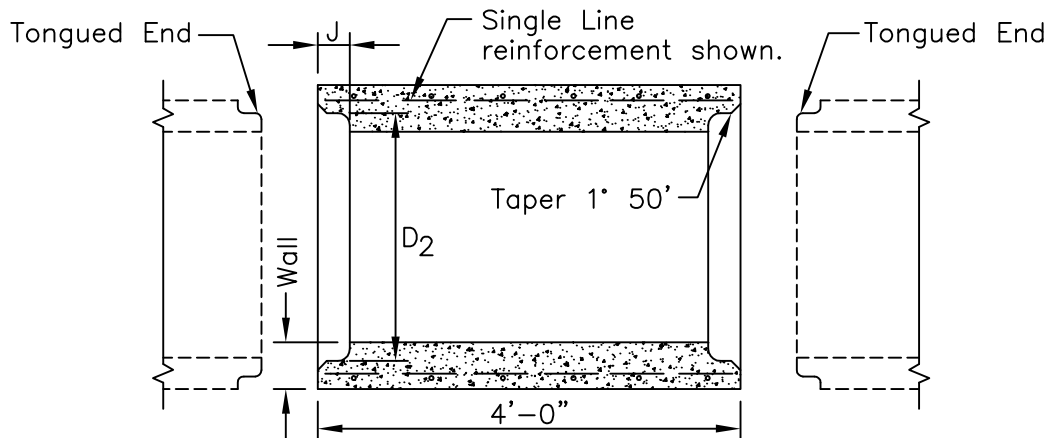


MACHINE MADE BELL CAGE

- ① Reinforcing in bell shall be located between 3/4" to 1-1/4" from inner face of bell.
- ② The bell cage shall be at least as wide as dimension B.
- ③ For double cage pipe, reinforcement shall be at least equal in area to that of the outside cage or line for bells or the inside cage or line for spigots. For single cage pipe, reinforcement shall be at least equal in area to that of the cage for either the bell or spigot. Bell cages shall not have fewer longitudinals than the main cage.
- ④ See Sheet 1 for all dimensions other than bell reinforcement.

BASIS FOR DESIGN:  
AASHTO M170

OPTIONAL BELL STEEL REINFORCEMENT  
(66" PIPE AND SMALLER PIPE)



Internal Diameter	12"	15"	18"	21"	24"	27"	30"	33"	36"
Wall	4-1/8"	4-1/2"	5"	5-3/8"	5-3/4"	6"	6-1/4"	6-5/8"	7-1/8"
Steel Inside (Sq.In./Lin.Ft.)	.08	.08	.10	.10	.12	.14	.18	.23	.27
Steel Outside (Sq.In./Lin.Ft.)					.09	.11	.14	.17	.20

OPTIONAL TRANSITION PIPE  
(CONNECT TONGUE END TO TONGUE END)

APPROVED <u>Apr. 15, 1986</u>  <b>R.H. Sullivan</b> Assistant Division Director Technical Services	STATE OF MINNESOTA DEPARTMENT OF TRANSPORTATION  <b>GASKET JOINT FOR R.C. PIPE</b> (Options)	SPECIFICATION REFERENCE 2501 2502 2503	STANDARD PLATE NO. 3006F 2 of 2
--	--	--	---